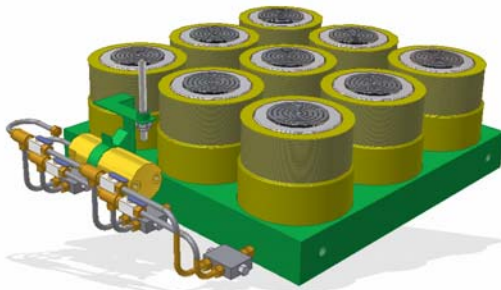
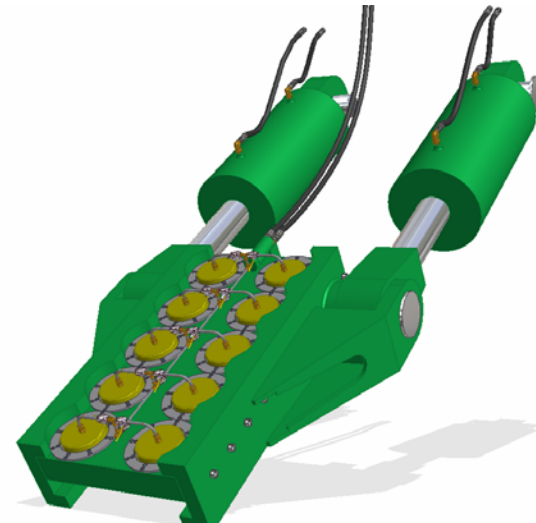
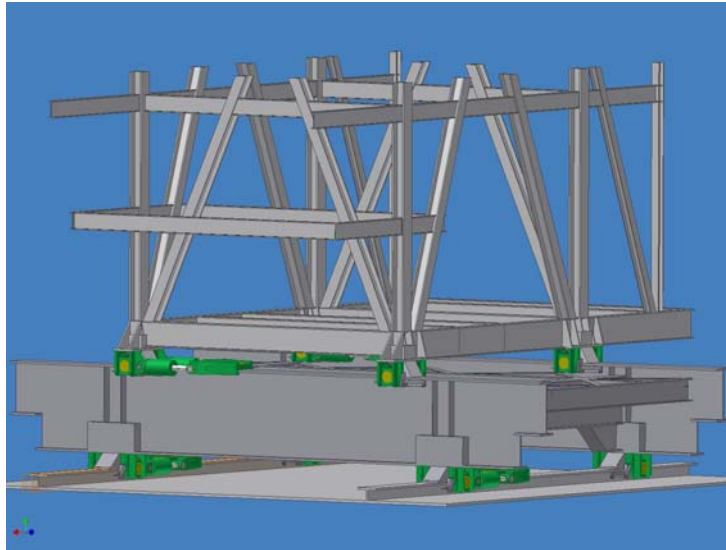




## Big structure moving and clamping system



Customer: Dynamic Equipment;  
subcontractor for British Petroleum

Each system uses:

76 pcs 200 Tm cylinders

16 pcs 560 Tm locknut cylinders





## Big structure moving and clamping system



For lifting, a total of 36, SS20006-2/L cylinders of 200 Tm and 60 mm stroke are used, in groups of 9 units.

The same type of cylinder is used for the clamping of the structure to allow the pull cylinders to enable the movement of the structure.



The side load that these cylinders will have to stand while the structure is being moved has been estimated at 65 Tm. The test is made simulating this side load with a standard extra flat 75Tm cylinder.





## Big structure moving and clamping system



To clamp the structure once the movement is complete, 16 cylinders ST56005-1/D with 560 Tm capacity each and 50 mm stroke are used. The locknut is tightened and loosened by a hydraulic motor powered through a gear drive.

The test is made at LARZEP in a test rig with a maximum capacity of 1.500 Tm

Body and locknut with Nitreg-ONC surface treating to assure the best resistance in aggressive environments.

